

Room Capacity: 304

### Front of House

Mix console - Allen & Heath 2200, 24 mic pre's  
4 Monitor mixes from front of house  
3-Way JBC flown system  
4 ea. JBL 4726 cabinets - 2 per side  
2 ea. JBL 4719 2x18" - 1 per side  
2 ea. Techron 7570 amps for lows  
1 ea. Ctown Macrotech 3600 for Mids  
1 ea. QSC 850 for Highs

### Monitors

4 ea. EAW 15" passive wedges  
4 ea. custom 15" passive wedges  
2 ea. Ctown Microtech 2400's  
Drum monitor = 1 Mackie 15" powered sub, 1 Mackie 450 powered speaker

### "Mic's & Stands"

2 ea. Beta 52's  
1 ea. SM 91  
6 ea. SM58  
6 ea. SM 57  
4 ea. Rode NTS  
4 ea. Countryman DI's

### Stage Features

3' high  
24' wide useable area  
1'-6" tall large drum riser  
Load in backstage  
Backstage area non-public  
A.C. outlets across the front and back  
Subwoofers located under stage  
Theater curtain against walls  
Over-constructed for added strength

### Lighting Features

16 channels, 2 scenes  
4 dimmer packs, 16 channels  
500 watts per channel  
House lights dimmed from controller

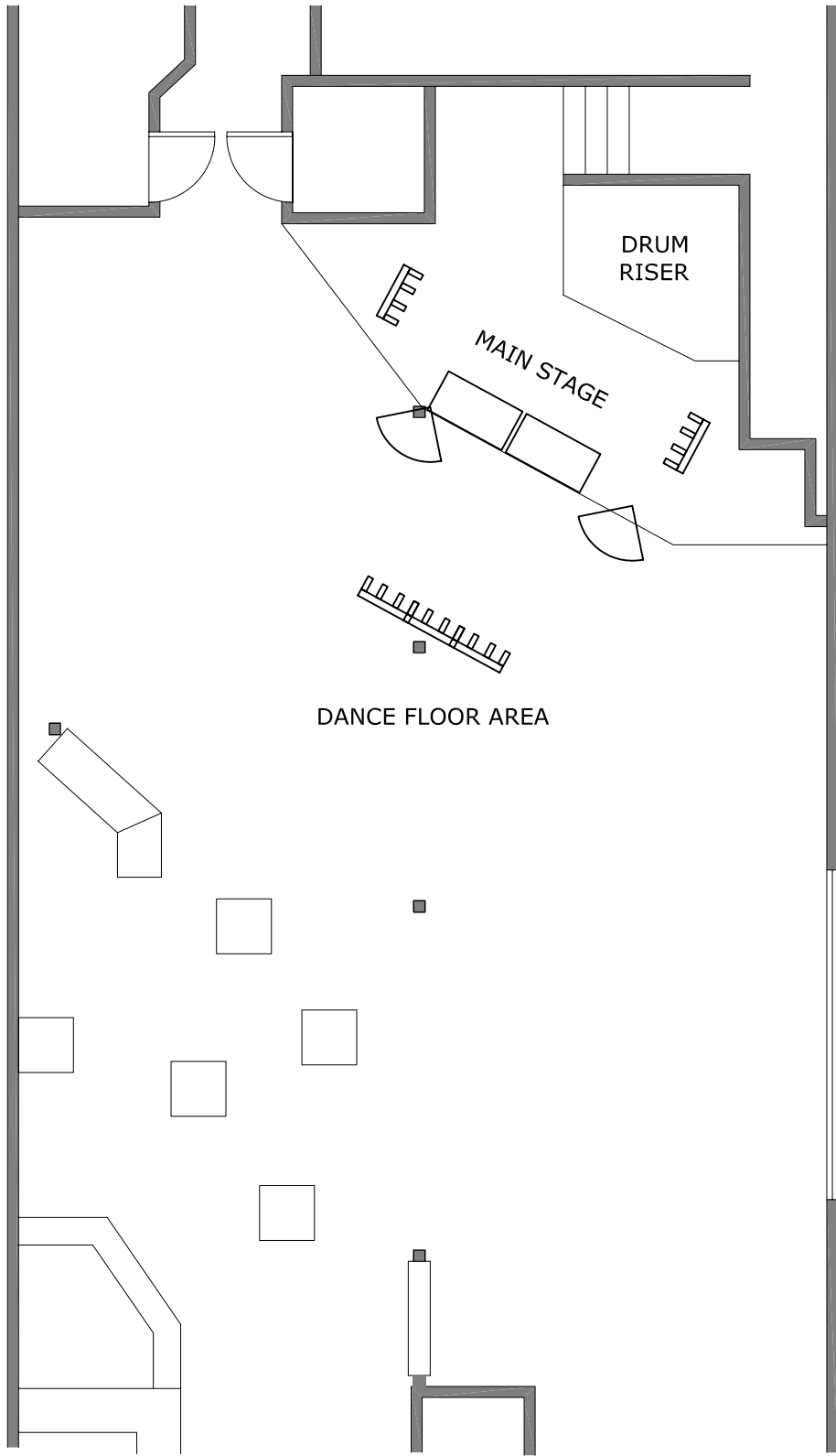
### P.A. Features

Short to medium throw  
Wide dispersion full range stereo  
4 biamped monitor mixes

Quality mic's and stands  
Quality compressors and gates  
Active D.I. boxes  
Quality mic cables  
CD Burner for live recording

Acoustical Treatments

Parts X-Press 1-800-338-0531  
Part # 260-316  
Part Description: 1-1/2" thick 2' x 3' convoluted foam  
\$3.90 ea.  
Color: Charcoal



DRUM  
RISER

MAIN STAGE

DANCE FLOOR AREA

